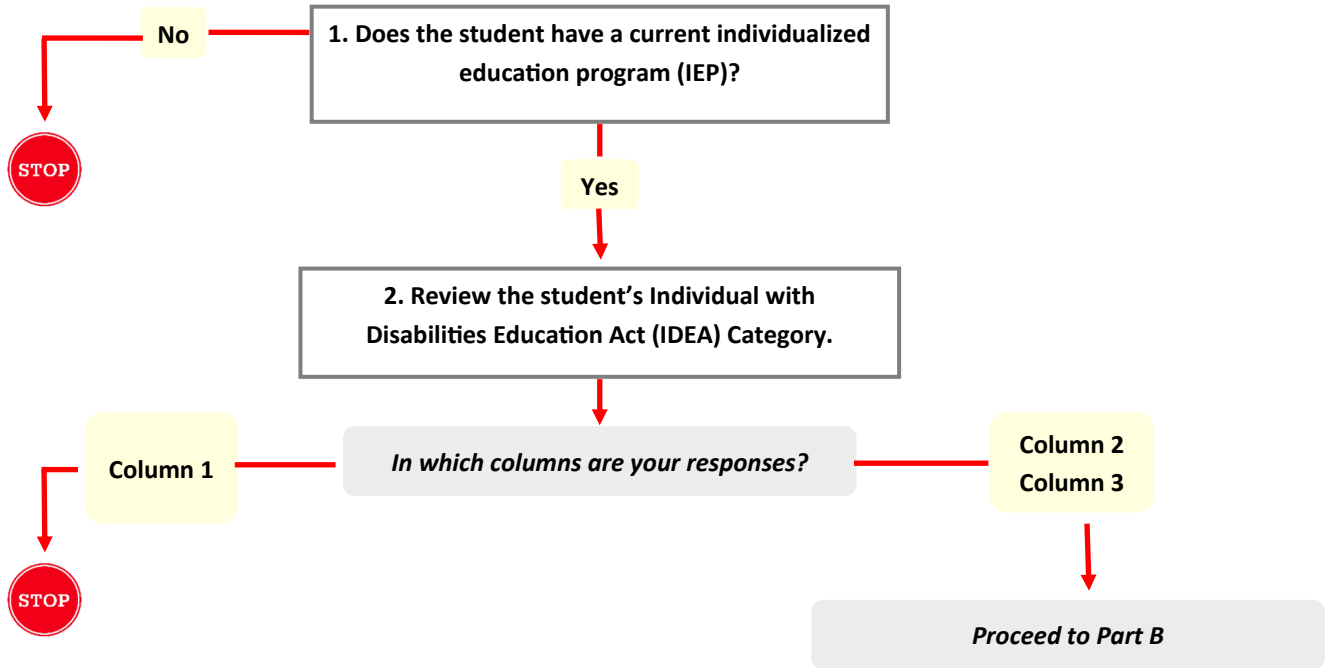




Note: For a PDF version of this form, see [Ohio's Alternate Assessment Participation Decision-Making Tool](#) on the Ohio Department of Education website.

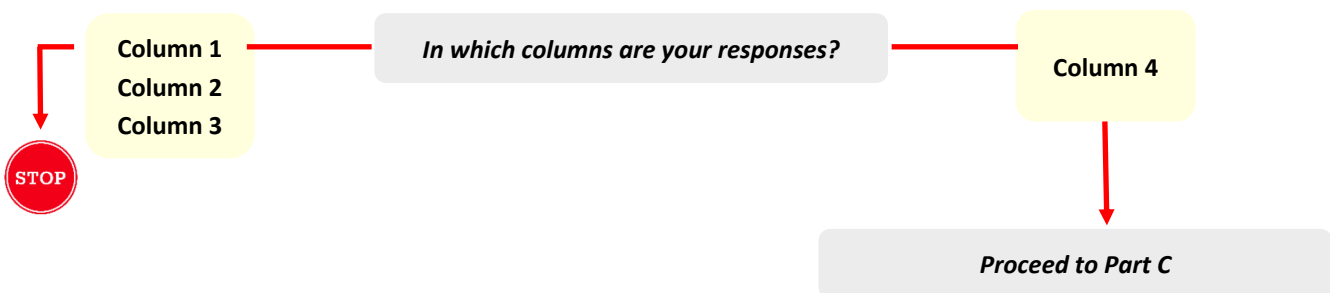
Part A – Determining Initial Eligibility



Part B – Determining the Student has a Most Significant Cognitive Disability

Select the most appropriate column for the student for each of the three adaptive skills domains:

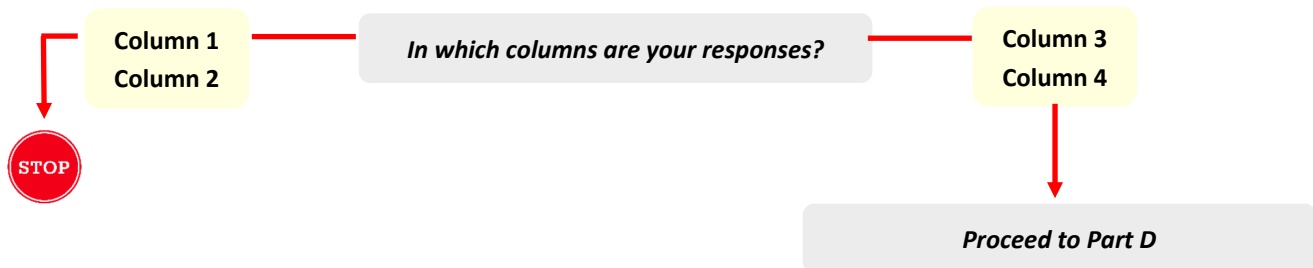
- Conceptual
- Social
- Practical



Part C – Determining if the student requires extensive direct individualized instruction

Select the most appropriate column for the student for each of the three sections:

- Curriculum, Instruction, Assessment
- Accommodation/Modifications
- Assistive Technology



Part D – Additional Considerations

Part D – Additional Considerations

The decision to participate in the alternate assessment is made after reviewing the entire decision-making tool and the collection of evidence used in parts A, B and C. The decision to participate in the alternate assessment is NOT made based solely on any of the following considerations.

- Disability category, educational environment or instructional setting.
- Student's instructional reading level is below grade level.
- Expected poor performance on the general education assessment.
- Administration decision or anticipated impact of student scores on the accountability system.
- Anticipated disruptive behavior or emotional duress if taking general assessments.
- Poor attendance or extended absences.
- The fact the student is an [English learner](#) or other social, cultural or economic differences.
- Need for accommodations (such as assistive technology or [augmentative and alternative communication](#)) to participate in the general assessment.

Clear

Based on the review of evidence in parts A, B and C and ensuring the decision is not based solely on any of the considerations above, does the student meet all criteria for participation in the alternate assessment?

Yes. The student meets all criteria in parts A, B and C and will participate in the alternate assessment.

No, the student does not meet all criteria in parts A, B and C and is not eligible for participation in the alternate assessment.

School District Representative Date

mm/dd/yyyy

1 Additional Considerations are not required.

2 Yes or No is selected based on your selections in Parts A, B, and C.

Completing the AASCD Decision-Making Tool

1. Sign electronic signatures and date the form.
2. Enter any **Additional Information**. Text you enter will print in the PDF after the AASCD Decision-Making Tool.