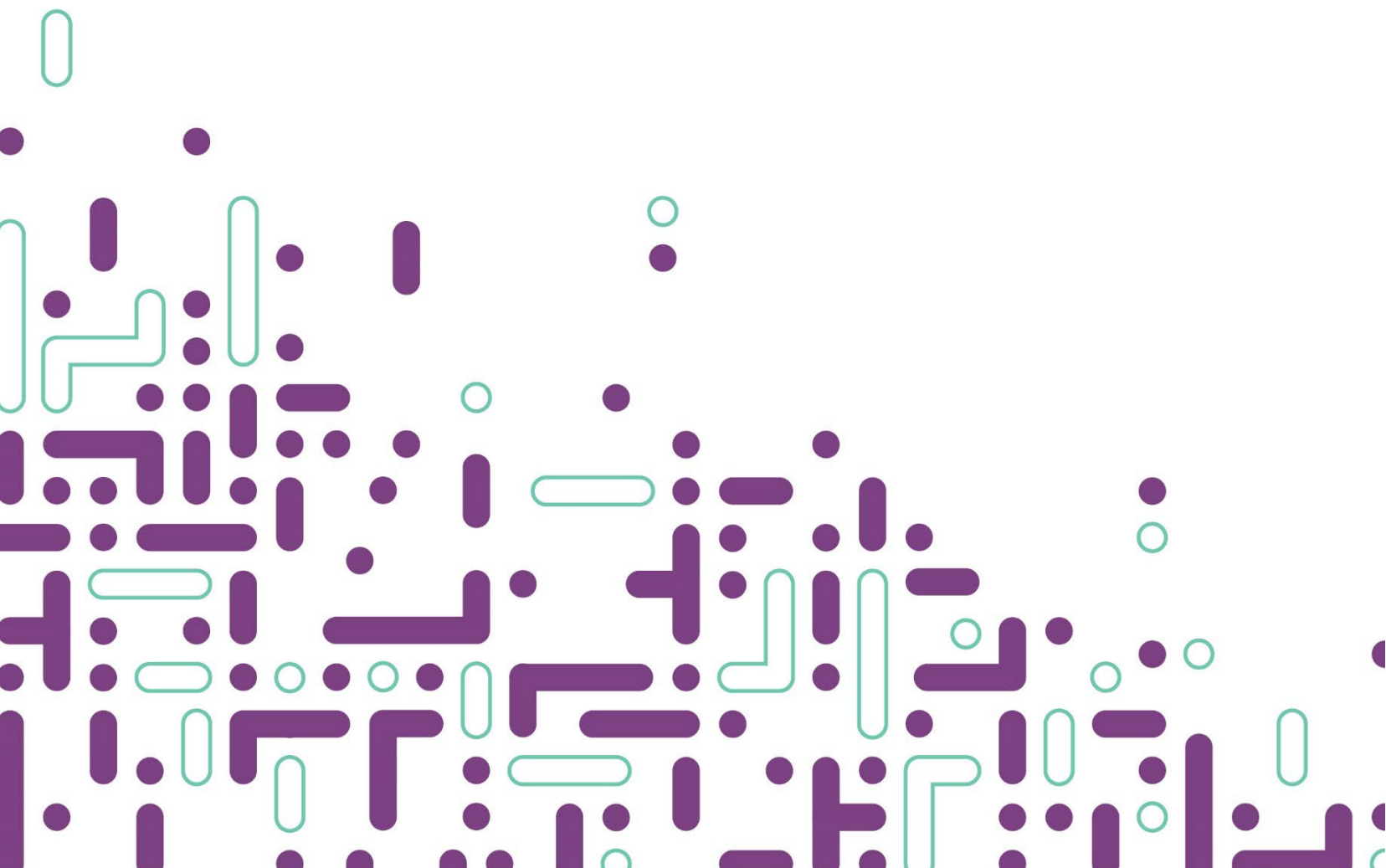




# ProgressBook Reporting Cycle Release Notes

**Version 22.x.x**



# Contents

Reporting v22.0.0 Release Notes .....	2
<b>Enhancements</b> .....	<b>2</b>
Analytics Hub.....	2
Categories .....	2
<b>Resolved Issues</b> .....	<b>3</b>
Analytics Hub.....	3

# Reporting v22.0.0 Release Notes

This document is an overview of updates in Reporting v22.0.0.

Included in this release:

- Enhancements
- Resolved Issues

The new Learning Center has launched! To access this resource, log in to ProgressBook and click ? (Help icon) in the top-right on any screen.

## Enhancements

### Analytics Hub

- In the **Eligibility** folder, the following Graduation Seal reports are now available:
  - **Earned Grad Seals by Student:** This report lists students who have earned a graduation seal as indicated by a selected **Earned** checkbox for the seal on the **Student Exemptions/Requirements** screen.
  - **Plans to Earn Grad Seals by Student:** This report lists students who are planning to earn a graduation seal as indicated by a selected **Plans to Earn** checkbox for the seal on the **Student Exemptions/Requirements** screen.
- In the **EMIS>EMIS Demographics** folder, the **Period S Core Summary** report is now available. This report lists the CORE summary records for each student by **CORE Subject Area**, the total credits earned for each subject area, and any college credit earned in each subject area for any student who has earned high school credit and has CORE summary records.

### Categories

- The category **GradPointStudentGraduationSeals** is now available for creating reports. This new category includes the following fields.

FIELD NAME	FIELD TYPE	FIELD NAME	FIELD TYPE
_DistBldg	Standard	_Year	Standard
Birthdate	Standard	Counselor	Standard

FIELD NAME	FIELD TYPE	FIELD NAME	FIELD TYPE
DistrictCode	Standard	DistrictId	Category Joining ID
DistrictIRN	Standard	DistrictName	Standard
Earned	Standard	EarnedEMISProgramCode	Standard
EMISID	Category Joining ID	ExemptionName	Standard
ExemptionTypeID	Category Joining ID	FirstName	Standard
FiscalYear	Standard	GradeLevel	Standard
Homeroom	Standard	HomeroomTeacher	Standard
HomeSchoolIRN	Standard	HomeSchoolName	Standard
IsPrimaryBuilding	Standard	LastName	Standard
MiddleName	Standard	PlanEMISProgramCode	Standard
PlansToEarn	Standard	Program	Standard
ProgramName	Standard	SchoolCode	Standard
SchoolID	Category Joining ID	SchoolIRN	Standard
SchoolName	Standard	SchoolYear	Standard
SchoolYearID	Category Joining ID	SchoolYearType	Standard
StateStudentID	Standard	StatusCode	Standard
StatusName	Standard	StudentID	Category Joining ID
StudentNumber	Standard		

## Resolved Issues

### Analytics Hub

- (PBSIS-4304) Previously, in the **Attendance > HB410** folder when the **Attendance Skipped Student Detail** report was selected, the **School Year** was not automatically populated with the current year. Now, when this report is selected, the **School Year** populates with the current year.
- (PBSIS-18990) Previously, in the **Eligibility** folder, the **End of Course Grad Points Remediation** report was excluding **End of Course Records** that had a **Score Not Reported** value of “W” or “X”. Now, when this report is generated, **End of Course Records** with a **Score Not Reported** value of “W” or “X” are included in the output.

